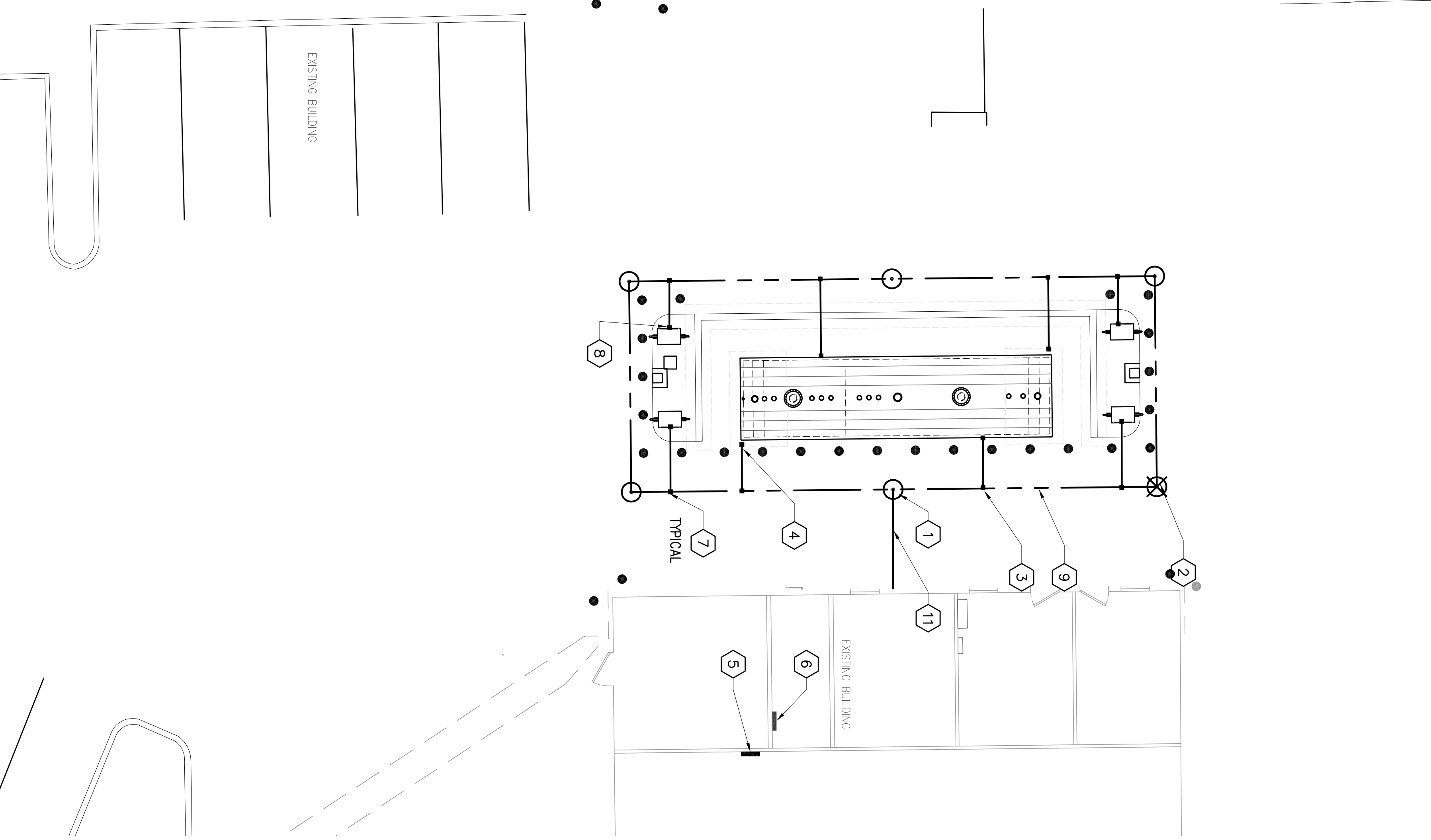
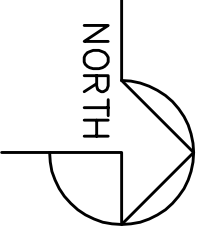
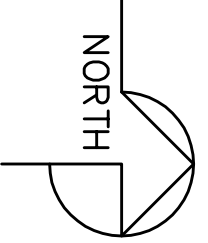


HAZARDOUS LOCATION PLAN
SCALE: 1/8" = 1'-0"



ELECTRICAL GROUNDING PLAN
SCALE: 1/8" = 1'-0"

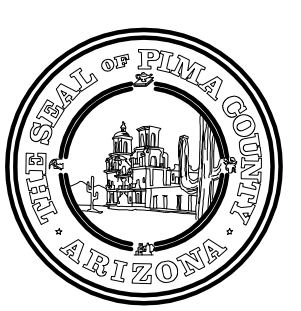


KEY NOTES

1. PROVIDE 3/4" X 10' COPPER CLAD GROUND ROD, TYPICAL FOR 6.
2. PROVIDE GROUND TEST WELL. REFER TO DETAIL 1 SHEET 'EP502.'
3. PROVIDE #2 SDBC TO NEW FUEL TANK, TYPICAL FOR TWO LOCATIONS.
4. PROVIDE #2 SDBC TO REINFORCED CONCRETE TANK PAD REBAR WITH EXOTHERMIC WELD.
5. NEW PANEL '0P' BOND TO EXISTING GROUNDING SYSTEM.
6. EXISTING PANELS TO REMAIN.
7. PROVIDE #2 SDBC PIGTAIL UP TO INSIDE OF DISPENSER ENCLOSURE AND BOND AS APPLICABLE, TYPICAL OF 4.
8. NEW FUEL DISPENSER, TYPICAL OF 4 REFER TO MECHANICAL DRAWINGS 'M/P101' FOR INFORMATION.
9. PROVIDE #2 SDBC GROUND RING AROUND FUEL AND DISPENSING ISLAND.
10. CLASS 1, DIVISION 2 BOUNDARY AROUND FUEL DISPENSER LOCATION AND HORIZONTALLY AT 18' ABOVE FINISHED GRADE AND AROUND DISPENSERS.
11. EXTEND NEW GROUND RING TO EXISTING SYSTEM GROUND.

GENERAL NOTES

1. INSTALLATION SHALL CONFORM TO NEC ARTICLE 514.



RICHEY BLVD. FUEL TANK REPLACEMENT

PIMA COUNTY
FACILITIES MANAGEMENT
150 WEST CONGRESS, 5TH FL.
TUCSON, AZ 85701



ARCHITECTURE
ENGINEERING
CONSTRUCTION MANAGEMENT

2051 W. SUNSET RD.
SUITE NO. 101
TUCSON, ARIZONA 85704
TEL. (520) 293-1488
FAX (520) 293-6349
WWW.M3PN.COM

Revisions

Description	Date

Drawn: RLA
Checked: EBL
Issue Date: 12-17-2010

Drawing Title
ELECTRICAL GROUNDING PLAN

Sheet Number
EG101

M3PN 100100

Last Update: 7.1.2011